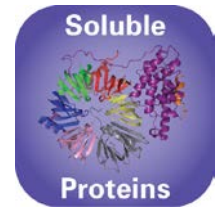


Molecular
Dimensions



PACT premier™

MD1-29

PACT premier is a pH, Anion, Cation crystallization trial devised to test pH within a PEG/Ion screen environment.

MD1-29 contains 96 x 10 mL reagents.

Features of PACT premier

- A modern, comprehensive PEG/ion screen.
- This 96-well screen is really 3 screens in one:
 - 24-well pH/PEG screen
 - 24-well cation/PEG screen
 - 48-well anion/PEG screen

Rationale for a new PEG/Ion screen

The first step in crystallization is often to reach for a commercially available “sparse matrix” kit, and hope that one of the conditions produces something that looks harvestable, or optimizable. If no obvious leads come out of the screen, it is hard to learn anything from the negative (precipitate and clear) results.

There are a few screens that try to test crystallization space in a more rational manner – for example, the Clear Strategy Screen and The Solubility Tool Kit.

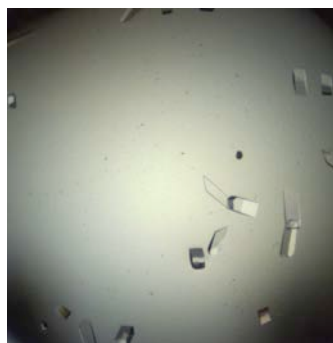
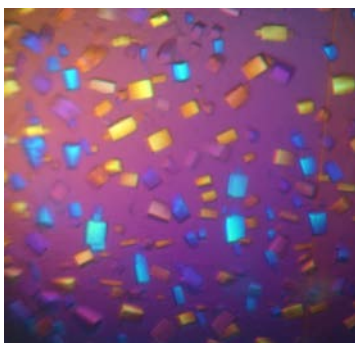
Traditional PEG/Ion screens provide a logical test of seven cations and eleven anions using PEG 3350 as the precipitation agent. However, the user has no control over pH and hence cannot determine the affect of one cation or anion over another.

For this reason the PEG/ION/pH (PACT) screen has been developed to systematically test the effect of pH, anions and cations, using PEG as the precipitant. This screen has been implemented very successfully at the Netherlands Cancer Institute (NKI), and at the Oxford Protein Production Facility (OPPF).

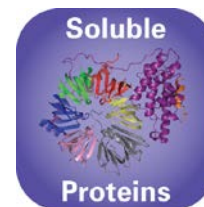
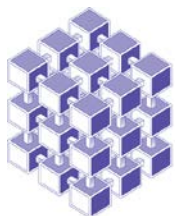
PACT premier

pH/PEG screen

This consists of four broad range buffer systems (1) versus PEG 1500. These buffers allow one to scan the pH range from 4 to 9, without changing the chemistry of the system, so effectively isolating the effect of pH from the effect of the buffer that causes the change in pH.



Protein crystals grown successfully with PACT premier.



PACT premier

Cation/PEG screen

This is made up of six cations (all with chloride counter ions) that are combined with PEG 6000 at four different pHs: Acetate pH 5, MES pH 6, HEPES pH 7 and Tris pH 8. The cations tested are Na⁺, NH₄⁺, Li⁺, Mg²⁺, Ca²⁺ and Zn²⁺. The zinc ion is tested at lower concentration than the other cations in the screen (0.01 M vs. 0.2 M)

Anion/PEG screen

This is made up of 12 anions, with either sodium or potassium counter ions, which are tested at 0.2 M against PEG 3350. The anions include fluoride, bromine, iodide, thiocyanate, nitrate, formate, acetate, sulfate, tartrate, phosphate, citrate and malonate. The phosphate solution is tested at a concentration of 0.02 M. Chloride is not included here as it is the counter ion in the cation screen. Three sets of reagents are tested at pH 6.5, 7.5, and 8.5 with the Bis-Tris-Propane buffer system whilst one set of reagents is tested without buffering.

References:

(1) Newman *et al* (2005). Towards rationalization of crystallization screening for small- to medium-sized academic laboratories: the PACT/JCSG+ strategy. *Acta Cryst.* **D61**, 1426-1431.

Formulation Notes

PACT premier reagents are formulated using ultrapure water (>18.0 MΩ) and are sterile-filtered using 0.22 μm filters. No preservatives are added.

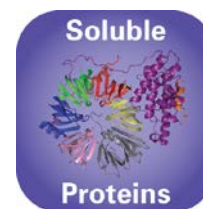
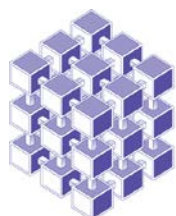
Final pH may vary from that specified on the datasheet. Molecular Dimensions will be happy to discuss the precise formulation of individual reagents.

Individual reagents and stock solutions for optimization are available from Molecular Dimensions.

Enquiries regarding **PACT-premier** formulation, interpretation of results or optimization strategies are welcome. Please e-mail, fax or phone your query to Molecular Dimensions.

Contact and product details can be found at www.moleculardimensions.com

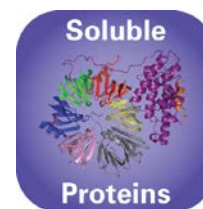
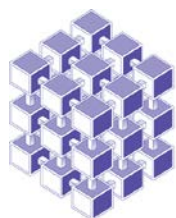
PACT premier- when used together with JCSG plus as a primary screening strategy is an extremely powerful and successful combination, (i.e. a combination of a modern sparse matrix approach and an information yielding systematic trial).



PACT premier

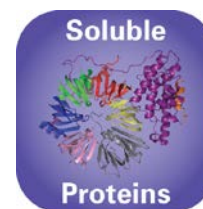
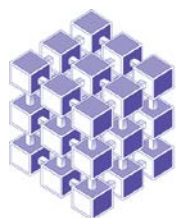
Conditions 1-48 (Box 1) MD1-29

Tube #	Conc. Salt	Conc. Buffer	pH	Conc. Precipitant
1-1		0.1 M SPG	4.0	25 % w/v PEG 1500
1-2		0.1 M SPG	5.0	25 % w/v PEG 1500
1-3		0.1 M SPG	6.0	25 % w/v PEG 1500
1-4		0.1 M SPG	7.0	25 % w/v PEG 1500
1-5		0.1 M SPG	8.0	25 % w/v PEG 1500
1-6		0.1 M SPG	9.0	25 % w/v PEG 1500
1-7	0.2 M Sodium chloride	0.1 M Sodium acetate	5.0	20 % w/v PEG 6000
1-8	0.2 M Ammonium chloride	0.1 M Sodium acetate	5.0	20 % w/v PEG 6000
1-9	0.2 M Lithium chloride	0.1 M Sodium acetate	5.0	20 % w/v PEG 6000
1-10	0.2 M Magnesium chloride hexahydrate	0.1 M Sodium acetate	5.0	20 % w/v PEG 6000
1-11	0.2 M Calcium chloride dihydrate	0.1 M Sodium acetate	5.0	20 % w/v PEG 6000
1-12	0.01 M Zinc chloride	0.1 M Sodium acetate	5.0	20 % w/v PEG 6000
1-13		0.1 M MIB	4.0	25 % w/v PEG 1500
1-14		0.1 M MIB	5.0	25 % w/v PEG 1500
1-15		0.1 M MIB	6.0	25 % w/v PEG 1500
1-16		0.1 M MIB	7.0	25 % w/v PEG 1500
1-17		0.1 M MIB	8.0	25 % w/v PEG 1500
1-18		0.1 M MIB	9.0	25 % w/v PEG 1500
1-19	0.2 M Sodium chloride	0.1 M MES	6.0	20 % w/v PEG 6000
1-20	0.2 M Ammonium chloride	0.1 M MES	6.0	20 % w/v PEG 6000
1-21	0.2 M Lithium chloride	0.1 M MES	6.0	20 % w/v PEG 6000
1-22	0.2 M Magnesium chloride hexahydrate	0.1 M MES	6.0	20 % w/v PEG 6000
1-23	0.2 M Calcium chloride dihydrate	0.1 M MES	6.0	20 % w/v PEG 6000
1-24	0.01 M Zinc chloride	0.1 M MES	6.0	20 % w/v PEG 6000
1-25		0.1 M PCTP	4.0	25 % w/v PEG 1500
1-26		0.1 M PCTP	5.0	25 % w/v PEG 1500
1-27		0.1 M PCTP	6.0	25 % w/v PEG 1500
1-28		0.1 M PCTP	7.0	25 % w/v PEG 1500
1-29		0.1 M PCTP	8.0	25 % w/v PEG 1500
1-30		0.1 M PCTP	9.0	25 % w/v PEG 1500
1-31	0.2 M Sodium chloride	0.1 M HEPES	7.0	20 % w/v PEG 6000
1-32	0.2 M Ammonium chloride	0.1 M HEPES	7.0	20 % w/v PEG 6000
1-33	0.2 M Lithium chloride	0.1 M HEPES	7.0	20 % w/v PEG 6000
1-34	0.2 M Magnesium chloride hexahydrate	0.1 M HEPES	7.0	20 % w/v PEG 6000
1-35	0.2 M Calcium chloride hexahydrate	0.1 M HEPES	7.0	20 % w/v PEG 6000
1-36	0.01 M Zinc chloride	0.1 M HEPES	7.0	20 % w/v PEG 6000
1-37		0.1 M MMT	4.0	25 % w/v PEG 1500
1-38		0.1 M MMT	5.0	25 % w/v PEG 1500
1-39		0.1 M MMT	6.0	25 % w/v PEG 1500
1-40		0.1 M MMT	7.0	25 % w/v PEG 1500
1-41		0.1 M MMT	8.0	25 % w/v PEG 1500
1-42		0.1 M MMT	9.0	25 % w/v PEG 1500
1-43	0.2 M Sodium chloride	0.1 M Tris	8.0	20 % w/v PEG 6000
1-44	0.2 M Ammonium chloride	0.1 M Tris	8.0	20 % w/v PEG 6000
1-45	0.2 M Lithium chloride	0.1 M Tris	8.0	20 % w/v PEG 6000
1-46	0.2 M Magnesium chloride hexahydrate	0.1 M Tris	8.0	20 % w/v PEG 6000
1-47	0.2 M Calcium chloride dihydrate	0.1 M Tris	8.0	20 % w/v PEG 6000
1-48	0.002 M Zinc chloride	0.1 M Tris	8.0	20 % w/v PEG 6000



PACT premier Conditions 1-48 (Box 2) MD1-29

Tube #	Conc.	Salt	Conc.	Buffer	pH	Conc.	Precipitant
2-1	0.2 M	Sodium fluoride				20 % w/v	PEG 3350
2-2	0.2 M	Sodium bromide				20 % w/v	PEG 3350
2-3	0.2 M	Sodium iodide				20 % w/v	PEG 3350
2-4	0.2 M	Potassium thiocyanate				20 % w/v	PEG 3350
2-5	0.2 M	Sodium nitrate				20 % w/v	PEG 3350
2-6	0.2 M	Sodium formate				20 % w/v	PEG 3350
2-7	0.2 M	Sodium acetate trihydrate				20 % w/v	PEG 3350
2-8	0.2 M	Sodium sulfate				20 % w/v	PEG 3350
2-9	0.2 M	Potassium sodium tartrate tetrahydrate				20 % w/v	PEG 3350
2-10	0.02 M	Sodium/potassium phosphate				20 % w/v	PEG 3350
2-11	0.2 M	Sodium citrate tribasic dihydrate				20 % w/v	PEG 3350
2-12	0.2 M	Sodium malonate dibasic monohydrate				20 % w/v	PEG 3350
2-13	0.2 M	Sodium fluoride	0.1 M	Bis-Tris propane	6.5	20 % w/v	PEG 3350
2-14	0.2 M	Sodium bromide	0.1 M	Bis-Tris propane	6.5	20 % w/v	PEG 3350
2-15	0.2 M	Sodium iodide	0.1 M	Bis-Tris propane	6.5	20 % w/v	PEG 3350
2-16	0.2 M	Potassium thiocyanate	0.1 M	Bis-Tris propane	6.5	20 % w/v	PEG 3350
2-17	0.2 M	Sodium nitrate	0.1 M	Bis-Tris propane	6.5	20 % w/v	PEG 3350
2-18	0.2 M	Sodium formate	0.1 M	Bis-Tris propane	6.5	20 % w/v	PEG 3350
2-19	0.2 M	Sodium acetate trihydrate	0.1 M	Bis-Tris propane	6.5	20 % w/v	PEG 3350
2-20	0.2 M	Sodium sulfate	0.1 M	Bis-Tris propane	6.5	20 % w/v	PEG 3350
2-21	0.2 M	Potassium sodium tartrate tetrahydrate	0.1 M	Bis-Tris propane	6.5	20 % w/v	PEG 3350
2-22	0.02 M	Sodium/potassium phosphate	0.1 M	Bis-Tris propane	6.5	20 % w/v	PEG 3350
2-23	0.2 M	Sodium citrate tribasic dihydrate	0.1 M	Bis-Tris propane	6.5	20 % w/v	PEG 3350
2-24	0.2 M	Sodium malonate dibasic monohydrate	0.1 M	Bis-Tris propane	6.5	20 % w/v	PEG 3350
2-25	0.2 M	Sodium fluoride	0.1 M	Bis-Tris propane	7.5	20 % w/v	PEG 3350
2-26	0.2 M	Sodium bromide	0.1 M	Bis-Tris propane	7.5	20 % w/v	PEG 3350
2-27	0.2 M	Sodium iodide	0.1 M	Bis-Tris propane	7.5	20 % w/v	PEG 3350
2-28	0.2 M	Potassium thiocyanate	0.1 M	Bis-Tris propane	7.5	20 % w/v	PEG 3350
2-29	0.2 M	Sodium nitrate	0.1 M	Bis-Tris propane	7.5	20 % w/v	PEG 3350
2-30	0.2 M	Sodium formate	0.1 M	Bis-Tris propane	7.5	20 % w/v	PEG 3350
2-31	0.2 M	Sodium acetate trihydrate	0.1 M	Bis-Tris propane	7.5	20 % w/v	PEG 3350
2-32	0.2 M	Sodium sulfate	0.1 M	Bis-Tris propane	7.5	20 % w/v	PEG 3350
2-33	0.2 M	Potassium sodium tartrate tetrahydrate	0.1 M	Bis-Tris propane	7.5	20 % w/v	PEG 3350
2-34	0.02 M	Sodium/potassium phosphate	0.1 M	Bis-Tris propane	7.5	20 % w/v	PEG 3350
2-35	0.2 M	Sodium citrate tribasic dihydrate	0.1 M	Bis-Tris propane	7.5	20 % w/v	PEG 3350
2-36	0.2 M	Sodium malonate dibasic monohydrate	0.1 M	Bis-Tris propane	7.5	20 % w/v	PEG 3350
2-37	0.2 M	Sodium fluoride	0.1 M	Bis-Tris propane	8.5	20 % w/v	PEG 3350
2-38	0.2 M	Sodium bromide	0.1 M	Bis-Tris propane	8.5	20 % w/v	PEG 3350
2-39	0.2 M	Sodium iodide	0.1 M	Bis-Tris propane	8.5	20 % w/v	PEG 3350
2-40	0.2 M	Potassium thiocyanate	0.1 M	Bis-Tris propane	8.5	20 % w/v	PEG 3350
2-41	0.2 M	Sodium nitrate	0.1 M	Bis-Tris propane	8.5	20 % w/v	PEG 3350
2-42	0.2 M	Sodium formate	0.1 M	Bis-Tris propane	8.5	20 % w/v	PEG 3350
2-43	0.2 M	Sodium acetate trihydrate	0.1 M	Bis-Tris propane	8.5	20 % w/v	PEG 3350
2-44	0.2 M	Sodium sulfate	0.1 M	Bis-Tris propane	8.5	20 % w/v	PEG 3350
2-45	0.2 M	Potassium sodium tartrate tetrahydrate	0.1 M	Bis-Tris propane	8.5	20 % w/v	PEG 3350
2-46	0.02 M	Sodium/potassium phosphate	0.1 M	Bis-Tris propane	8.5	20 % w/v	PEG 3350
2-47	0.2 M	Sodium citrate tribasic dihydrate	0.1 M	Bis-Tris propane	8.5	20 % w/v	PEG 3350
2-48	0.2 M	Sodium malonate dibasic monohydrate	0.1 M	Bis-Tris propane	8.5	20 % w/v	PEG 3350



Abbreviations:

HEPES; N-(2-hydroxyethyl)-piperazine-N'-2-ethanesulfonic acid, **MES**; 2-(N-morpholino)ethanesulfonic acid, **PEG**; Polyethylene glycol, **Tris**; 2-Amino-2-(hydroxymethyl)propane-1,3-diol, **SPG buffer**; Succinic Acid, Phosphate, Glycine, **MIB buffer**; Malonic acid, Imidazole, Boric acid, **PCTP buffer**; Propionic acid, Cacodylate, Bis-tris propane, **MMT buffer**; Malic acid, MES, Tris.

Manufacturer's safety data sheets are available from our website or by scanning the QR code here:



Ordering details:

Catalogue Description

Catalogue Code

PACT <i>premier</i>	(96 x 10 mL kit)
PACT <i>premier</i> HT-96	(96 x 1 mL)
PACT <i>premier Eco Screen</i>	(96 x 10 mL kit)
PACT <i>premier</i> HT-96 <i>Eco Screen</i>	(96 x 1 mL)

MD1-29
MD1-36
MD1-29-ECO
MD1-36-ECO

Green Screens

PACT <i>premier</i> Green Screens	(96 x 10 mL kit)
PACT <i>premier</i> HT-96 Green Screens	(96 x 1 mL)

MD1-55
MD1-52

Single Reagents

PACT <i>premier</i>	(100 mL)
PACT <i>premier</i> HT-96	(100 mL)
PACT <i>premier</i> Green screen	(100 mL)
PACT <i>premier</i> Green screen HT-96	(100 mL)

MDSR-29 - tube number
MDSR-36 - well number
MDSR-55 - tube number
MDSR-52 - well number

For PACT *premier*[™] stock reagents visit our Optimization page on our website.