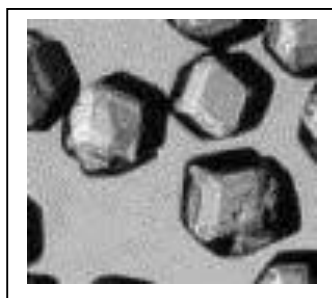


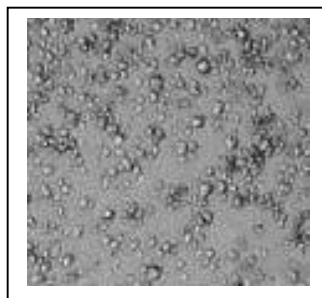
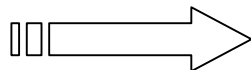
MicroSeed Beads™

Micro-seeding has become a more common practice in protein crystallography in recent years, mainly due to the advent of more automated methods and a string of successes.

MicroSeed Beads™ are used in the preparation of crystal seed stocks for seeding experiments. These seed stocks are then serially diluted and used to impregnate crystallization drops close saturated to the metastable zone. Seeds can be used to re-seed an existing sparse matrix screen or in the growth of single larger crystals. So start seeding today.....



From large crystals



to small crystal "seeds"



Micro-seed with tube

Selected References:

1. Luft, J.R. and DeTitta, G.T., *Meth. Enzymol.* (1997) 276, 110-131.
2. D'Arcy, A. *et al.* " An automated microseed matrix-screening method". *Acta Cryst.* (2007). **D63**, 550-554.
3. Stura, E.A., Wilson, I.A., *Methods: A Companion to Methods in Enzymology* (1990) 1, 38-49.
4. Stura, E.A., Wilson, I.A., "Seeding Techniques" in *Crystallization of Nucleic Acids and Proteins: A Practical Approach*. Oxford University Press (1992) 99-126.

Each kit contains:

24x PTFE beads in sterile microcentrifuge tubes.

Order now using code MD2-14.